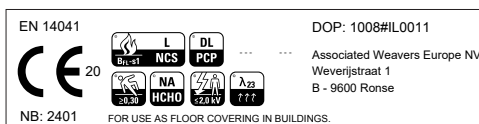


# MEDUSA TILE



**MAVERICK®**  
COMMERCIAL CARPET & TILES

Type of manufacture (carpet tile) Art der Herstellung (Teppichfliese) Methode de fabrication (dalle de moquette)	ISO 2424		1/10 Loop Pile (tufted)
Dimensions Abmessungen Dimensions	EN ISO 24342	cm	50cm x 50cm 20 tiles/box = 5m <sup>2</sup> · 24 boxes/pallet = 120m <sup>2</sup>
Primary backing Trägermaterial Premier dossier	ISO 2424		Polyester non-woven
Secondary backing Rückenausrüstung Envers sous-couche	ISO 2424		Bitumen
Pile fibre composition Faserzusammensetzung der Nutzschicht Composition du velours	ISO 2424		iMax® 100% Solution Dyed Nylon (SDN)
Total thickness Gesamtdicke Épaisseur totale	ISO 1765	mm	5,4
Effective pile thickness Polschichtdicke Épaisseur du velours	ISO 1766	mm	2,4
Total mass Gesamtgewicht Masse surfacique totale	ISO 8543	g/m <sup>2</sup>	4.000
Total pile mass Poleinsatzgewicht Masse surfacique de velours totale	ISO 2424	g/m <sup>2</sup>	505
Effective pile mass Polschichtgewicht Masse surfacique de velours utile	ISO 8543	g/m <sup>2</sup>	280
Pile density Pol-Rohdichte Densité du velours	ISO 8543	g/cm <sup>3</sup>	0,117
Number of tufts Noppenzahl Nombre de touffes	ISO 1763	/dm <sup>2</sup>	1.970
Static electrical propensity Begehtest Test du marcheur	ISO 6356	kV	≤2
Use classification Beanspruchungsbereich Classement d'usage	EN 1307		33 Contract use - Heavy 33 Objektbereich - Extrem 33 Professionnel - Intensive
Luxury rating Komfortklasse Classement de confort	EN 1307		LC1
Thermal resistance Wärmedurchlaßwiderstand Résistance thermique	ISO 8302	m <sup>2</sup> .K/W	0,09
Dimensional stability Dimensionsstabilität Stabilité dimensionnelle	EN 986	%	≤ 0,20
Flammability Brennverhalten Tenue au feu	EN 13501-1		Bfl - s1 Loose laid (2020/210-1)
Prodis - GUT	www.pro-dis.info		127825
DOP			1008#IL0011
Laying direction Verlegerichtung Direction de pose			



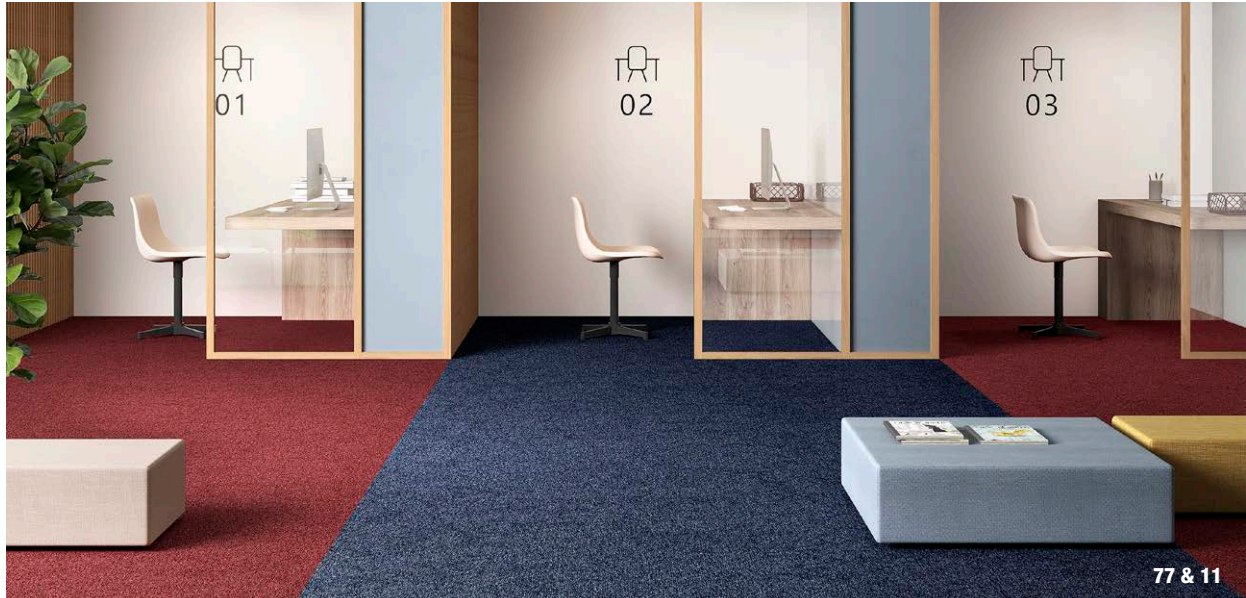
Update 05/2021

Associated Weavers Europe NV - Industriepark Klein Frankrijk - Weverijstraat 1 - 9600 Ronse - Belgium  
T +32 55 230 211 - F +32 55 215 551 - www.associated-weavers.com

# MEDUSA TILE



MAVERICK®  
COMMERCIAL CARPET & TILES



11 50x50cm



21 50x50cm



33 50x50cm



40 50x50cm



43 50x50cm



70 50x50cm



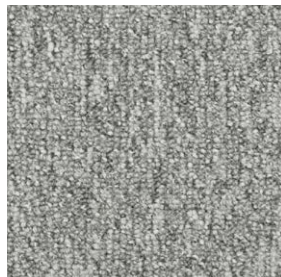
77 50x50cm



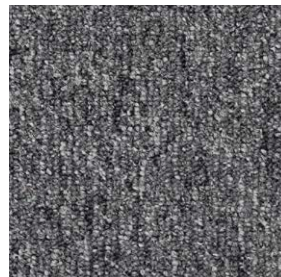
84 50x50cm



90 50x50cm



94 50x50cm



98 50x50cm



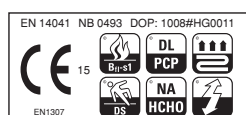
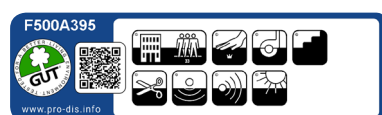
99 50x50cm

Update 05/2021

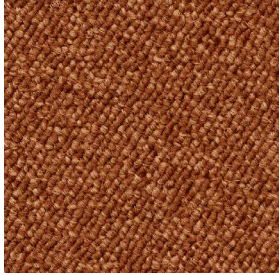
Associated Weavers Europe NV - Industriepark Klein Frankrijk - Weverijstraat 1 - 9600 Ronse - Belgium  
T +32 55 230 211 - F +32 55 215 551 - [www.associated-weavers.com](http://www.associated-weavers.com)



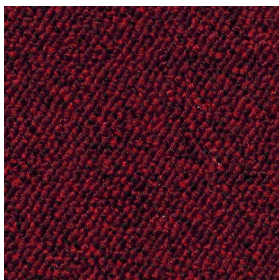
Type of manufacture (wall-to-wall carpet) Art der Herstellung (Teppichboden) Methode de fabrication (moquette)	ISO 2424		1/10 Loop Pile (tufted)
Width Abmessungen Largeur		cm	400 + 500
Primary backing Trägermaterial Premier dossier	ISO 2424		Polypropylene woven
Secondary backing Rückenausrüstung Envers sous-couche	ISO 2424		Polypropylene woven
Pile fibre composition Faserzusammensetzung der Nutzschicht Composition du velours	ISO 2424		iMax® 100% Solution Dyed Nylon (SDN)
Total thickness Gesamtdicke Epaisseur totale	ISO 1765	mm	5,3
Effective pile thickness Polschichtdicke Epaisseur du velours	ISO 1766	mm	2,9
Total mass Gesamtgewicht Masse surfacique totale	ISO 8543	g/m <sup>2</sup>	1.600
Total pile mass Poleinsatzgewicht Masse surfacique de velours totale	ISO 2424	g/m <sup>2</sup>	520
Effective pile mass Polschichtgewicht Masse surfacique de velours utile	ISO 8543	g/m <sup>2</sup>	348
Pile density Pol-Rohdichte Densité du velours	ISO 8543	g/cm <sup>3</sup>	0,121
Number of tufts Noppenzahl Nombre de touffes	ISO 1763	/dm <sup>2</sup>	1.900
Static electrical propensity Begehtest Test du marcheur	ISO 6356	kV	≤ 2
Use classification Beanspruchungsbereich Classement d'usage	EN 1307		33 Contract use - Heavy 33 Objektbereich - Extrem 33 Professionnel - Intensive
Luxury rating Komfortklasse Classement de confort	EN 1307		LC1
Impact sound reduction ΔLw Trittschallverbesserungsmaß ΔLw Réduction du bruit de choc ΔLw	ISO 10140	dB	25
Sound absorption Schallabsorption Absorption phonique	ISO 354	Freq. Hz	125 250 500 1000 2000 4000
		αs	0,01 0,04 0,07 0,20 0,38 0,41
Noise reduction Schallreduktion Réduction phonique	ISO 354	αw	0,15
Thermal resistance Wärmedurchlaßwiderstand Résistance thermique	ISO 8302	m <sup>2</sup> .K/W	0,08
Flammability Brennverhalten Tenue au feu	EN 13501-1		Bfl - s1 Glued on a non-combustible substrate (19.04941.01)
Prodis - GUT	www.pro-dis.info		F500A395
DOP			1008#HG0011



Update 08/2020



85 4+5m



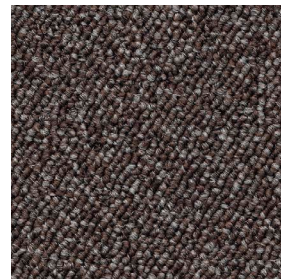
12 4+5m



33 4+5m



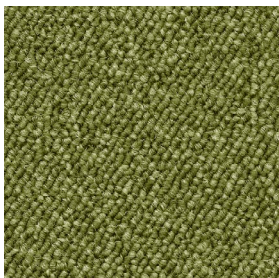
37 4+5m



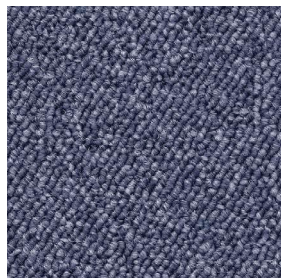
40 4+5m



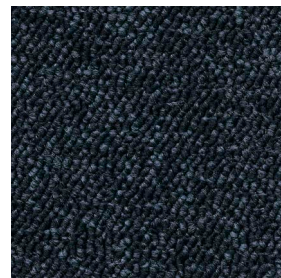
45 4+5m



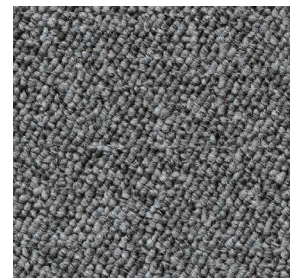
21 4+5m



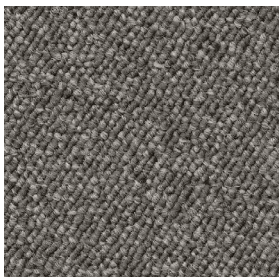
75 4+5m



78 4+5m



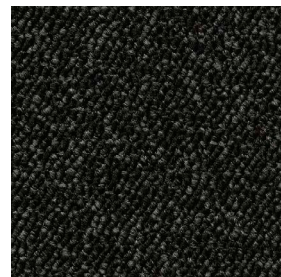
90 4+5m



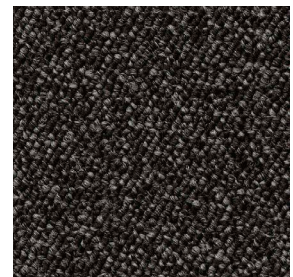
94 4+5m



97 4+5m



98 4+5m

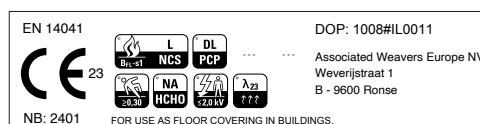
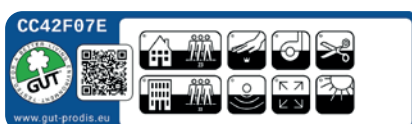


99 4+5m

# MACRO TILE



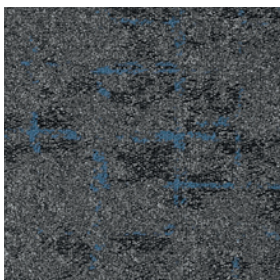
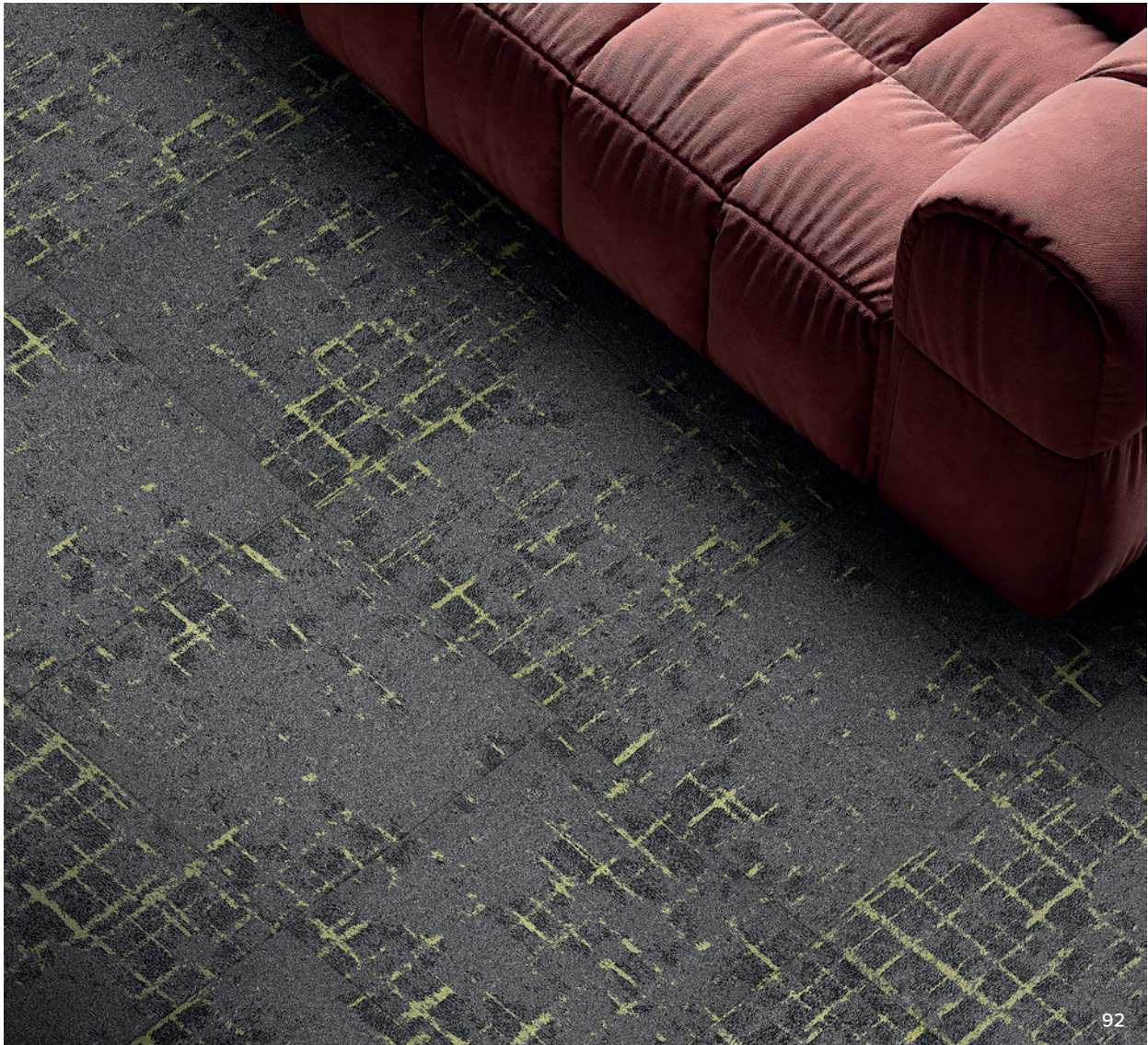
Type of manufacture (carpet tile) Art der Herstellung (Teppichfliese) Methode de fabrication (dalle de moquette)	ISO 2424		1/10 Loop Pile (tufted)
Dimensions Abmessungen Dimensions	EN ISO 24342	cm	50cm x 50cm (20 tiles/box)
Primary backing Trägermaterial Premier dossier	ISO 2424		Polyester non-woven
Secondary backing Rückenausrüstung Envers sous-couche	ISO 2424		Bitumen
Pile fibre composition Faserzusammensetzung der Nutzschicht Composition du velours	ISO 2424		iMax® 100% Solution Dyed Nylon (SDN)
Total thickness Gesamtdicke Épaisseur totale	ISO 1765	mm	6,1
Effective pile thickness Polschichtdicke Épaisseur du velours	ISO 1766	mm	2,6
Total mass Gesamtgewicht Masse surfacique totale	ISO 8543	g/m <sup>2</sup>	4.145
Total pile mass Poleinsatzgewicht Masse surfacique de velours totale	ISO 2424	g/m <sup>2</sup>	450
Effective pile mass Polschichtgewicht Masse surfacique de velours utile	ISO 8543	g/m <sup>2</sup>	270
Pile density Pol-Rohdichte Densité du velours	ISO 8543	g/cm <sup>3</sup>	0,104
Number of tufts Noppenzahl Nombre de touffes	ISO 1763	/dm <sup>2</sup>	2.010
Static electrical propensity Begehtest Test du marcheur	ISO 6356	kV	≤ 2
Use classification Beanspruchungsbereich Classement d'usage	EN 1307		33 Contract use - Heavy Objektbereich - Extrem Professionnel - Intensive
Luxury rating Komfortklasse Classement de confort	EN 1307		LC1
Impact sound insulation ΔLw Trittschallverbesserungsmaß ΔLw Réduction du bruit de choc ΔLw	ISO 10140	dB	21
Sound absorption Schallabsorption Absorption phonique	ISO 354	Freq. Hz αs	125 250 500 1000 2000 4000 0,03 0,03 0,06 0,15 0,31 0,45
sound absorption coefficient Schallreduktion Réduction phonique	ISO 354	αw	0,15 (H)
Thermal resistance Wärmedurchlaßwiderstand Résistance thermique	ISO 8302	m <sup>2</sup> .K/W	0,06
Dimensional stability Dimensionsstabilität Stabilité dimensionnelle	EN 986	%	≤ 0,20
Flammability Brennverhalten Tenue au feu	EN 13501-1		Bfl - s1 Loose laid (2022/045-1)
DOP			1008#IL0011
Laying direction Verlegerichtung Sens de pose			



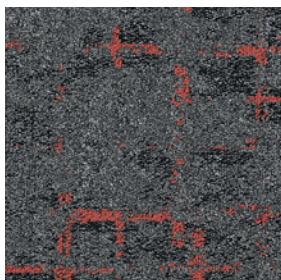
# MACRO TILE



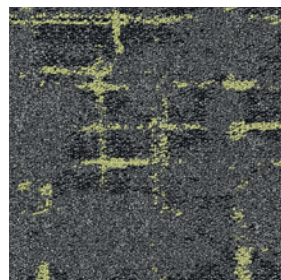
MAVERICK®  
COMMERCIAL CARPET & TILES



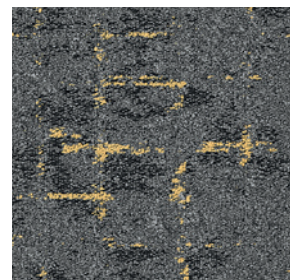
79 50x50cm



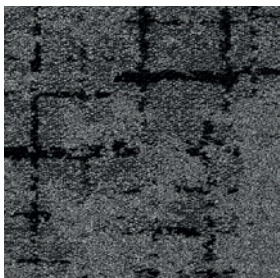
91 50x50cm



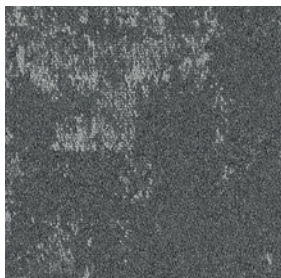
92 50x50cm



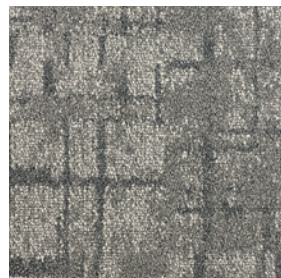
95 50x50cm



97 50x50cm



94 50x50cm



96 50x50cm



93 50x50cm