

THE EVOLUTION OF WOOD FLOORING



SOLUTIONS

SOLUCIONES SOLUTIONS SOLUÇÕES

FIBRANO COLLECTION 



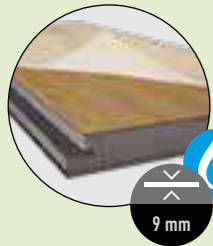
Click system

Sistema Clic Système de clic



HDF CLIC

- EN** · 5 layers of high-resistance class 33 "Hot Coating" varnish · Digital painting with the selected design · Elastic layer of natural fiber · HDF natural wood fiber board moisture retardant · Thermal-acoustic insulating layer of natural cork.
- ES** · 5 capas de barniz "Hot Coating" clase 33 de alta resistencia · Digital pinting con el diseño seleccionado · Capa elástica de fibra natural · Tablero de fibras de madera natural HDF retardante de humedad · Capa aislante térmico-acústica de corcho natural.
- FR** · 5 couches de vernis "Hot Coating" classe 33 à haute résistance · Peinture numérique avec le dessin choisi · Couche élastique en fibre naturelle · Panneau de fibres de bois naturel HDF retardateur d'humidité · Couche isolante thermo-acoustique en liège naturel.
- PT** · 5 camadas de verniz de alta resistência classe 33 "Hot Coating" · Pintura digital com desenho seleccionado · Camada elástica de fibra natural · Placa de fibra de madeira natural HDF retardante de humidade · Camada isolante termo-acústica de cortiça natural.



HIDROWOOD CLIC

- EN** · 5 layers of high-resistance class 33 "Hot Coating" varnish · Digital painting with the selected design · Elastic layer of natural fiber · HIDROWOOD natural wood fiber board moisture retardant · Thermal-acoustic insulating layer of natural cork.
- ES** · 5 capas de barniz "Hot Coating" clase 33 de alta resistencia · Digital pinting con el diseño seleccionado · Capa elástica de fibra natural · Tablero de fibras de madera natural HIDROWOOD retardante de humedad · Capa aislante térmico-acústica de corcho natural.
- FR** · 5 couches de vernis "Hot Coating" classe 33 à haute résistance · Peinture numérique avec le dessin choisi · Couche élastique en fibre naturelle · Panneau de fibres de bois naturel HDF retardateur d'humidité · Couche isolante thermo-acoustique en liège naturel.
- PT** · 5 camadas de verniz de alta resistência classe 33 "Hot Coating" · Pintura digital com desenho seleccionado · Camada elástica de fibra natural · Placa de fibra de madeira natural HDF retardante de humidade · Camada isolante termo-acústica de cortiça natural.

SUSTAINABILITY

SOSTENIBILIDAD DURABILITÉ SUSTENTABILIDADE

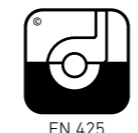


EN The innovative Second Life process opens up new possibilities in the realm of sustainability and authentic recycling. When the old flooring has worn out or if a new design is desired, the end customer sends the flooring to our factory through the distributor and we recycle it. The old design is removed from the rest of the floor by sanding it. The flooring is again prepared for priming, digitally printed and 5 layers of protection are coated. Finally, it is outlined with a new click and delivered to the customer recycled and as new. The economic cost of the second life to have a new product back represents 30% of the initial cost + logistics costs.

ES El innovador proceso Second Life abre nuevas posibilidades en el ámbito de la sostenibilidad y el reciclaje auténtico. Cuando el pavimento antiguo se ha desgastado o si se desea un nuevo diseño, el cliente final envía el suelo a nuestra fábrica a través del distribuidor y lo reciclamos. El antiguo diseño se quita del resto del suelo, lijándolo. Se vuelve a preparar el pavimento para su imprimación, se imprime digitalmente y se recubre 5 capas de protección. Por último, se perfila con un nuevo clic y se entrega al cliente reciclado y como nuevo. El coste económico de la segunda vida para tener de vuelta un producto nuevo representa el 30% del coste inicial + costes logísticos.

FR Le processus innovant de Second Life ouvre de nouvelles possibilités dans le domaine de la durabilité et du recyclage authentique. Lorsque l'ancien revêtement de sol est usé ou si un nouveau design est souhaité, le client final envoie le revêtement de sol à notre usine par l'intermédiaire du distributeur et nous le recyclons. L'ancien design est retiré du reste du sol en le ponçant. Le revêtement de sol est à nouveau préparé pour l'apprêt, imprimé numériquement et 5 couches de protection sont enduites. Enfin, il est esquissé d'un nouveau clic et livré au client recyclé et comme neuf. Le coût économique de la seconde vie pour récupérer un nouveau produit représente 30% du coût initial + coûts logistiques.

PT O processo inovador do Second Life abre novas possibilidades no campo da sustentabilidade e da reciclagem autêntica. Quando o piso antigo estiver gasto ou se desejar um novo design, o cliente final envia o piso para a nossa fábrica através do distribuidor e nós reciclamo-lo. O desenho antigo é removido do resto do piso lixando-o. O piso é novamente preparado para primer, impresso digitalmente e 5 camadas de proteção são revestidas. Por fim, é delimitado com um novo clique e entregue ao cliente reciclado e como novo. O custo econômico da segunda vida para ter um novo produto de volta representa 30% do custo inicial + custos logísticos.



FIBRANO COLLECTION 

WOOD LONGBOARD 0,55

HDF CLIC 1815 x 200 x 9 mm
HIDROWOOD CLIC 1815 x 200 x 9 mm



201623 Savannah Oak Dark Grey

201622 Oak Sevilla Taupe

201626 Kaya Oak Wellington

201629 Mirabell Oak Caramell

WOOD LONGBOARD 0,55

HDF CLIC 1815 x 200 x 9 mm
HIDROWOOD CLIC 1815 x 200 x 9 mm



201606 Oak Sevilla



201631 Oak Raw Amber



201638 Cortina Oak Alabaster



201541 Oak Villa Gold



201638 Cortina Oak Alabaster

WOOD LONGBOARD 0,55

HDF CLIC 1815 x 200 x 9 mm
HIDROWOOD CLIC 1815 x 200 x 9 mm



201630 Mirabell Oak Raw Wood



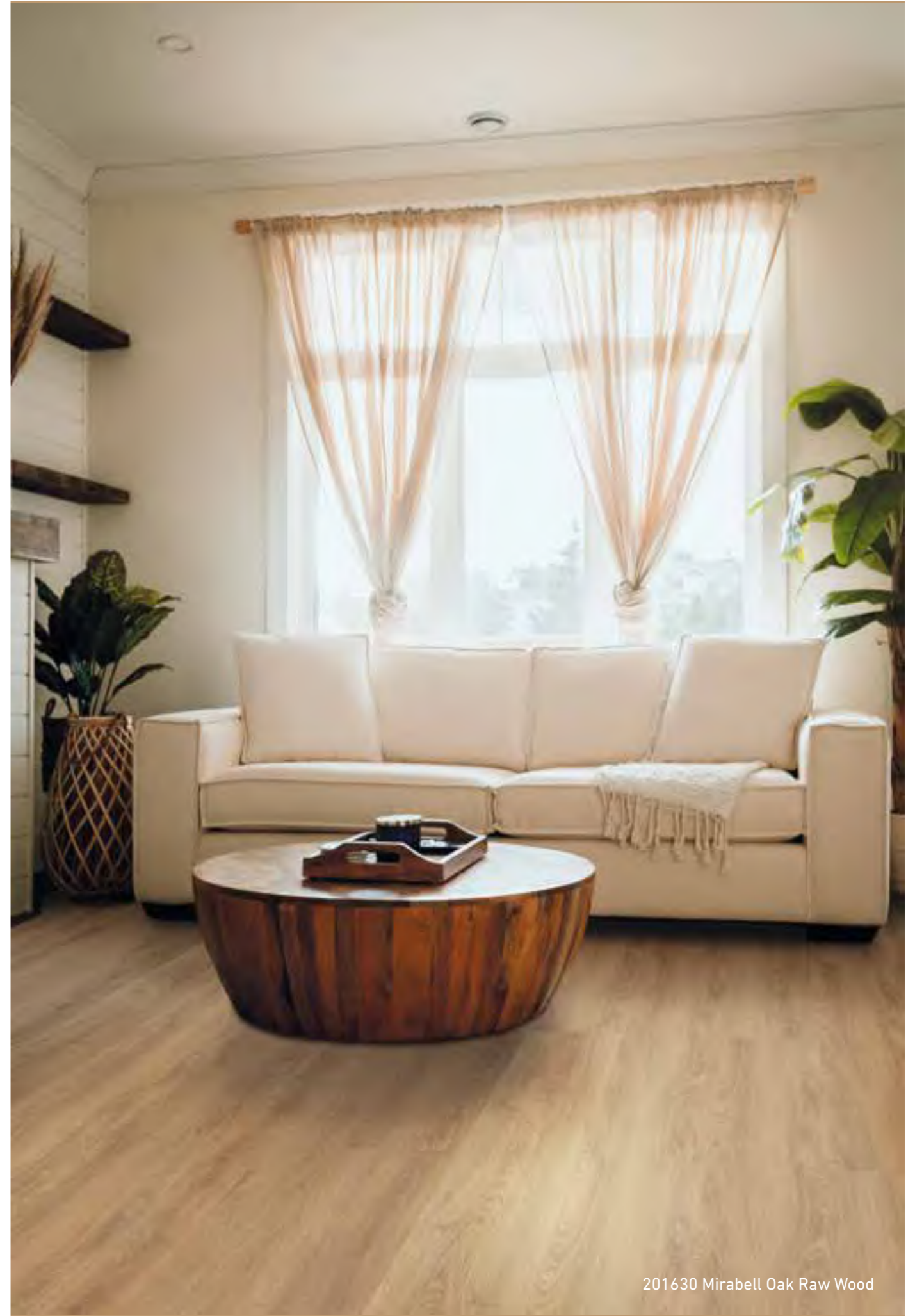
201627 Kaya Oak Meadow



201642 Kaya Oak Light



201551 Northern Oak Silver



201630 Mirabell Oak Raw Wood

STONE 0,55

HDF CLIC 620 x 450 x 9 mm
HIDROWOOD CLIC 620 x 450 x 9 mm



201556 Concrete Polished White



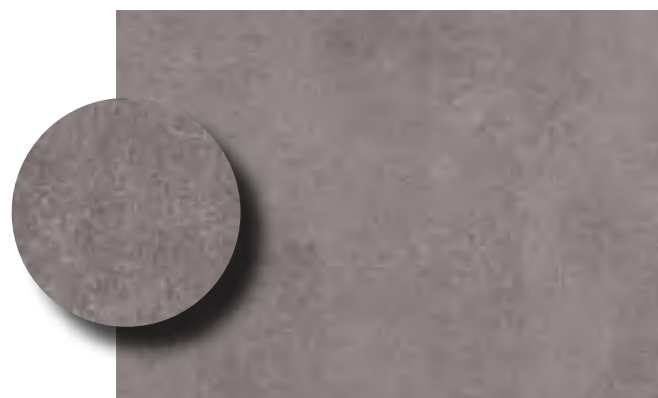
201327 Cement Light Ceramic



201166 Sandstone



201400 Pebble



201621 Concrete Urban



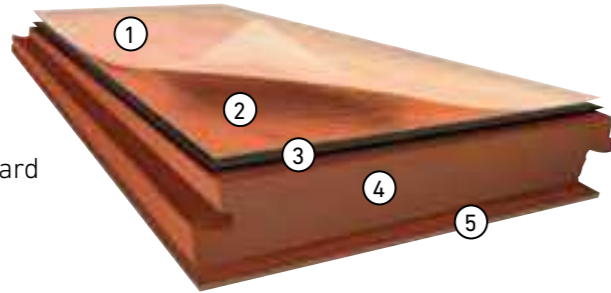
201518 Cement Ash



201556 Concrete Polished White

HDF CLIC
 STONE / WOOD LONGBOARD

- ① HotCoating protection
- ② Lightfast digital print
- ③ Fibrano® comfort layer
- ④ Moisture retardant fiber-board
- ⑤ Cork underlay



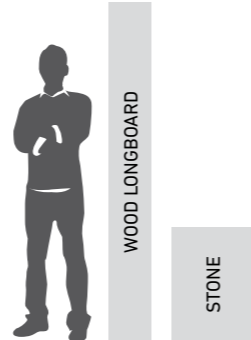
PRODUCT AND COMPOSITION
 100% NATURAL & MADE IN EUROPE
 60% NATURAL FIBERS
 20% NATURAL RUBBER
 10% VEGETABLE FAT
 8% WATER
 1% MINERAL FIBER



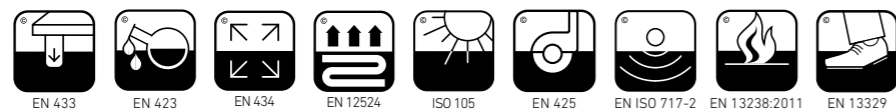
DIMENSIONAL STABILITY
 16x12 m (192 m²)

TRACCION CLIC
 > 500 Kg/ml

Always use with
 Floover Vapor Barrier



Characteristics	Test	HDF Clic
Dimensions & thickness	EN 427 & EN 428	ca. 1815x200x9 mm (Longboard) ca. 620x450x9 mm (Stone)
Classification	EN 16511	commercial 33
Total weight	EN 430	7.300 g/m²
Abrasion resistance	EN 14354 & EN 13329	AC5 / Class 34
Effect of castro chair	EN 425	Suitable for type W
Reaction of fire	EN ISO 9239-1	Cfl s1
Thermal resistance	EN 12524	ca. 0,08 m² K/W
Dimensional stability	EN 434	< 0,15%
Residual inentation	EN 433	max. 0,08 mm
Lighfast	ISO 105	> 7
Resistance to chemicals	EN 423	Very good resistance
Emissions value		in conformity with AgBB
Locking strenght	ISO 24334	HDF > 500 kg/lfm - kg/ml
Reaction to static electricity	EN 1815	< 2,0 kV antistatic
Micro scratch resistance	EN 16094	MSR-B1
Effect of a furniture leg	EN 424	No visible damage
Effect of stains	EN 438-2:2016	Grad 4-5
Impact sound reduction	EN ISO 717-2	ca. 17 dB
Impact resistance	EN 438-2 / EN 13329	Class 34 ≥ 1800 mm fall height / big ball



HIDROWOOD CLIC
 STONE / WOOD LONGBOARD

- ① HotCoating protection
- ② Lightfast digital print
- ③ Fibrano® comfort layer
- ④ Waterproof hydro core board
- ⑤ Cork underlay



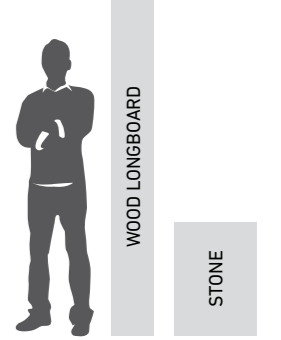
PRODUCT AND COMPOSITION
 100% NATURAL & MADE IN EUROPE
 60% NATURAL FIBERS
 20% NATURAL RUBBER
 10% VEGETABLE FAT
 8% WATER
 1% MINERAL FIBER



DIMENSIONAL STABILITY
 30x20 m (600 m²)

TRACCION CLIC
 > 700 Kg/ml

Always use with
 Floover Vapor Barrier



Characteristics	Test	Hidrowood Clic
Dimensions & thickness	EN 427 & EN 428	ca. 1815x200x9 mm (Longboard) ca. 620x450x9 mm (Stone)
Classification	EN 16511	commercial 33
Total weight	EN 430	7.300 g/m²
Abrasion resistance	EN 14354 & EN 13329	AC5 / Class 34
Effect of castro chair	EN 425	Suitable for type W
Reaction of fire	EN ISO 9239-1	Cfl s1
Thermal resistance	EN 12524	ca. 0,08 m² K/W
Dimensional stability	EN 434	< 0,15%
Residual inentation	EN 433	max. 0,08 mm
Lighfast	ISO 105	> 7
Resistance to chemicals	EN 423	Very good resistance
Emissions value		in conformity with AgBB
Swellness value 24h	EN 317	< 1% (wasserfest / waterproof)
Locking strenght	ISO 24334	HIDROWOOD > 700 kg/lfm - kg/ml
Reaction to static electricity	EN 1815	< 2,0 kV antistatic
Micro scratch resistance	EN 16094	MSR-B1
Effect of a furniture leg	EN 424	No visible damage
Effect of stains	EN 438-2:2016	Grad 4-5
Impact sound reduction	EN ISO 717-2	ca. 17 dB
Impact resistance	EN 438-2 / EN 13329	Class 34 ≥ 1800 mm fall height / big ball

